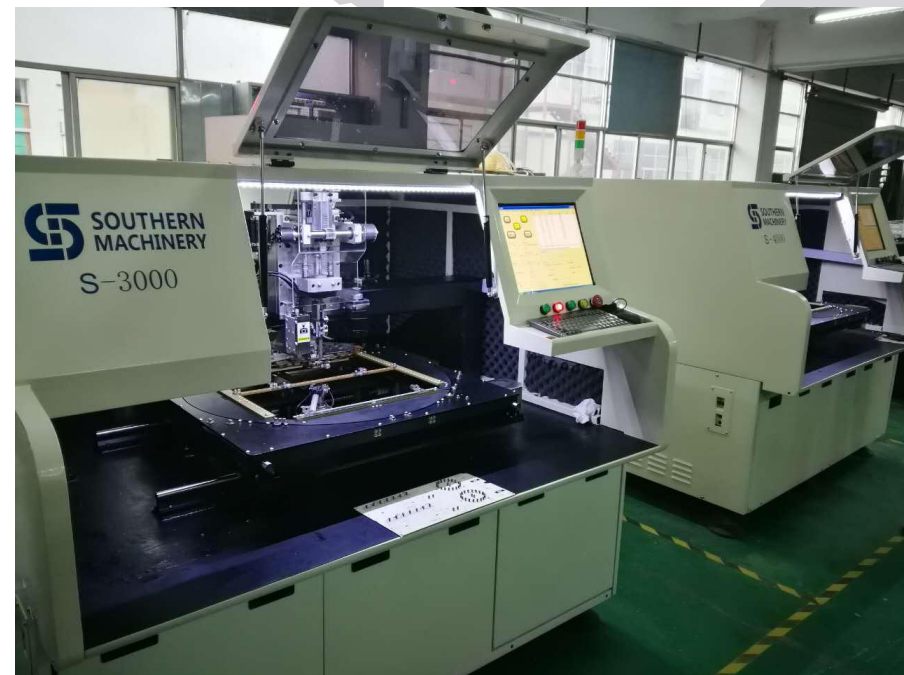
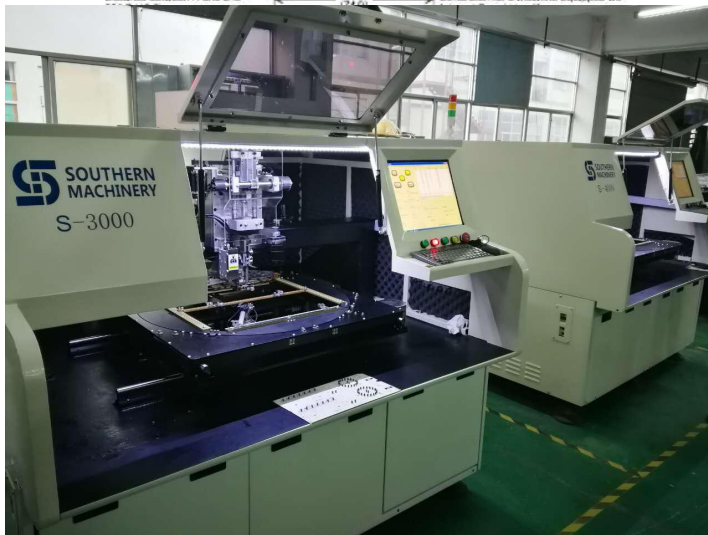
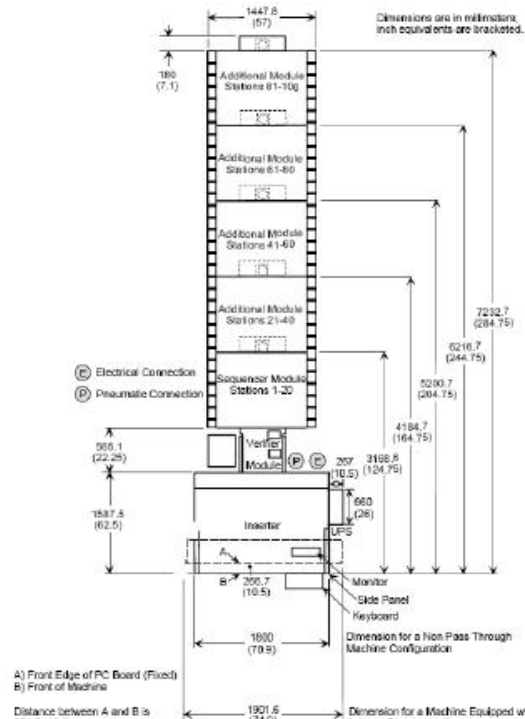


- Low cost Auto Insertion Solutions
- Professional THT
- Worldwide support
- Free Installation and Training
- Free THT design guidance



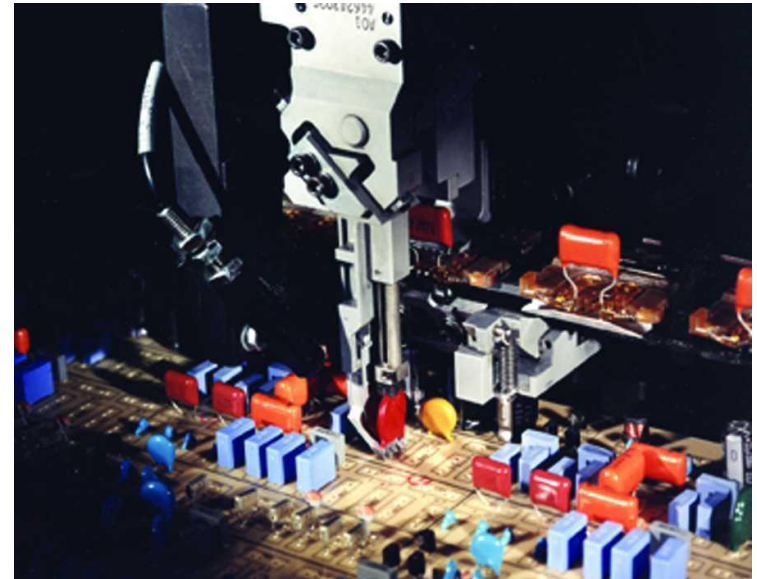
S-3000 RADIAL INSERTION MACHINE



- Up to 22,000 cph
- Off-line/In-line operation availability
- Using imported precision ball-screw & AC Servo system, positioning accuracy <math><0.001\text{mm}</math>
- Vision system for positioning and insertion alignment
- Accurate insertion angle in $0-360^\circ$, with 1° increment
- Integral forming cast iron machine frame
- Multiple lead span combination available: 2.5/5.0mm; 2.5/5.0/7.5mm; 5.0/7.5/10.0mm; 2.5/3.5/5.0mm; 2.5/5.0/7.5/10.0mm
- Option of automatic error recovery
- Long lifetime insertion driving axis structure
- Compatible with Universal insertion m/c feeder
- USB port for data transfer & Excel format compatible

» S-3010

- » **OFF LINE/IN LINE**
- » **HIGH SPEED**
- » **RADIAL INSERTION
M/C**
- » **10 FEEDERS ONLY**



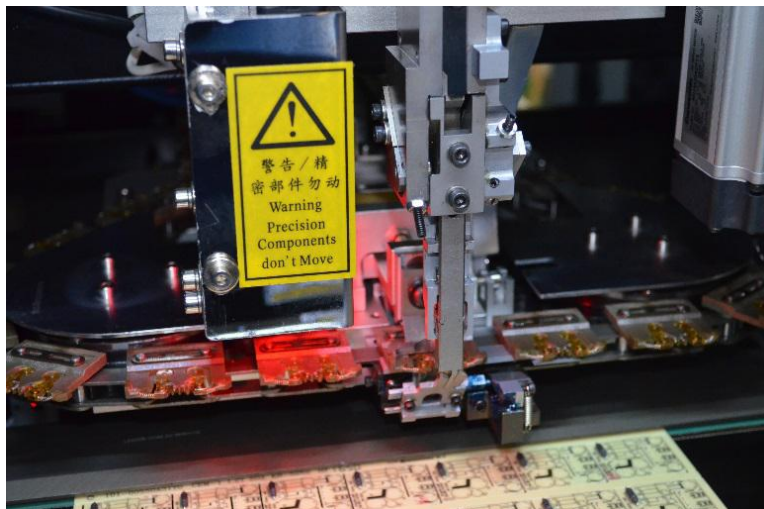
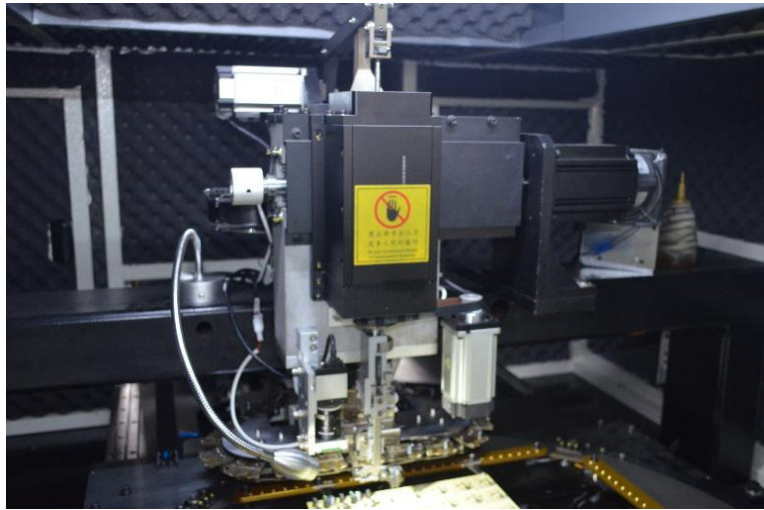
MACHINE OUTLINE & SIZE



- Dimension L1750 x W1450 x H1700mm(Off-Line)
- Dimension L1920 x W1450 x H1700(In-Line)
- Weight: 1150kg
- Feeder Module L1800 x W1450 x H1100mm

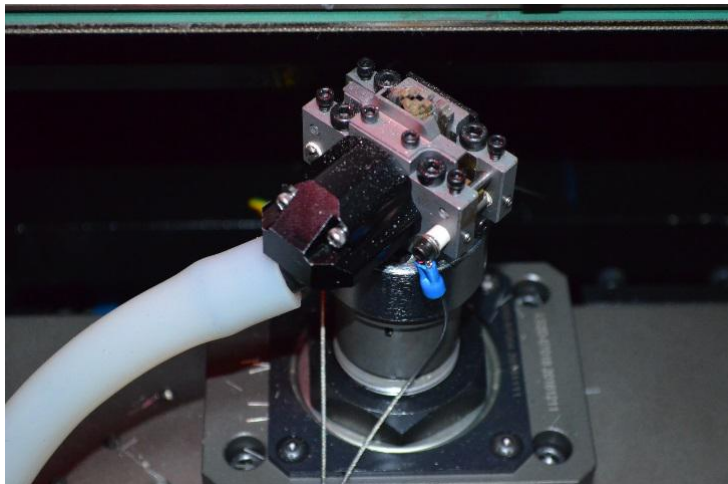


INSERTION HEAD

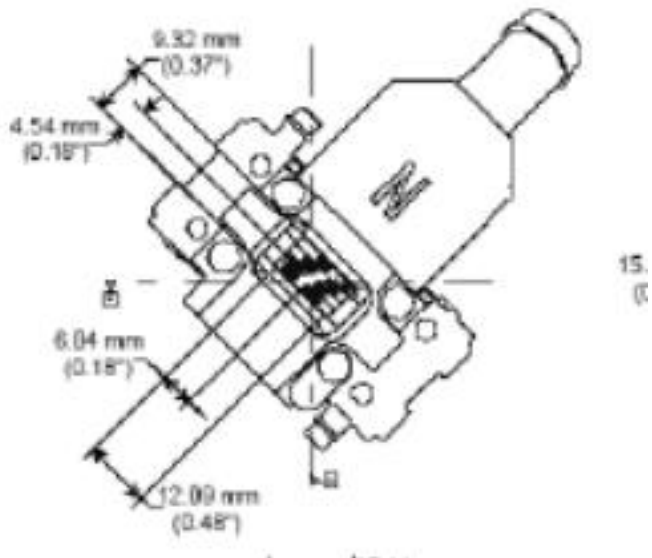


- Toothed bar driving axis, reduce cost and easy alignment
- 2000W motor driving, higher insertion speed
- Accurate insertion angle in 0-360°, with 1° increment
- Cover 4 different lead span 2.5/5.0/7.5/10.0mm
- Insertion depth programmable
- Servo driven component transfer to main claw structure(CTA)

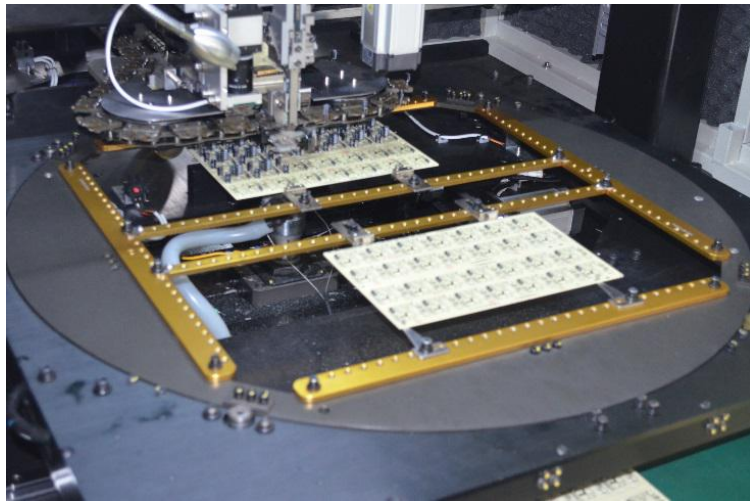
CUT & CLINCH HEAD



- 1.2/1.5/1.8mm lead length selectable, 10-35° clinch
- 3.5mm lead span components
- Inward/outward clinch
- Servo driven cut & clinch module up/down
- Lead scrap collection mechanism

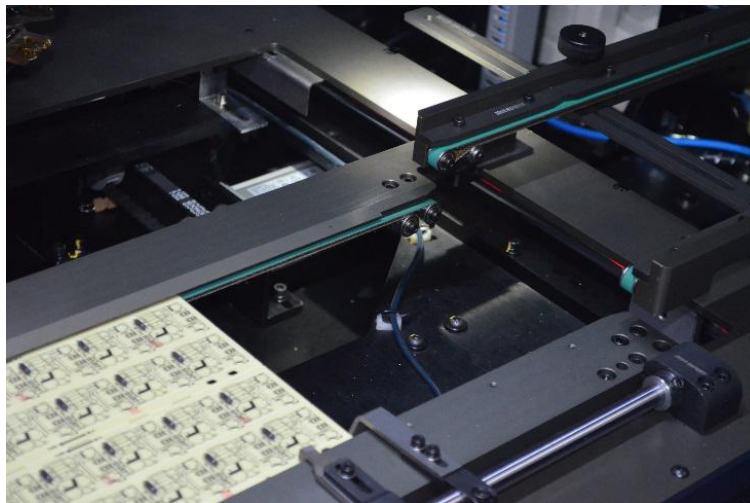


WORK BOARD HOLDER OR BOARD HANDLING SYSTEM



WBH

- 360° clockwise/counter clockwise rotation table (Off-line m/c)
- PCB size Min: 50x50mm ; Max: 450x450mm
- Non-stop PCB loading



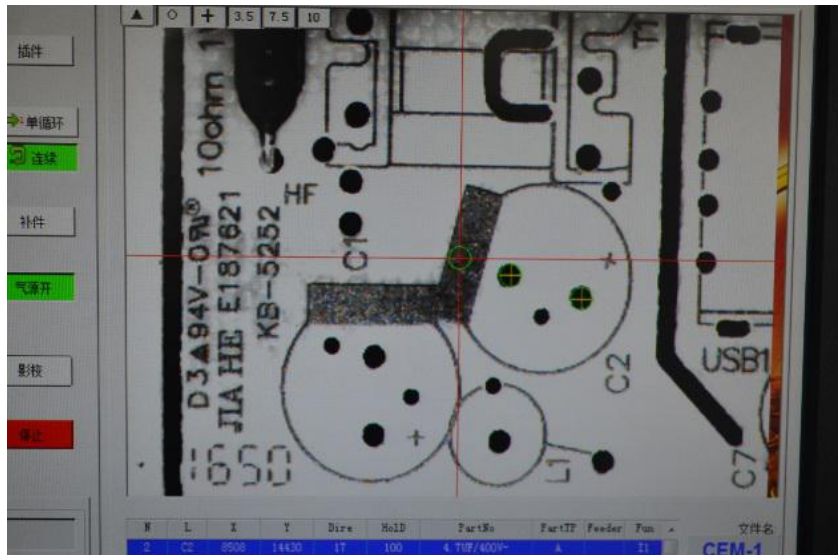
BHS

- Auto PCB load/unload, width adjustable conveyor(On-line m/c)
- PCB size Min: 50x50mm ; Max: 400x285mm
- SMEMA interface

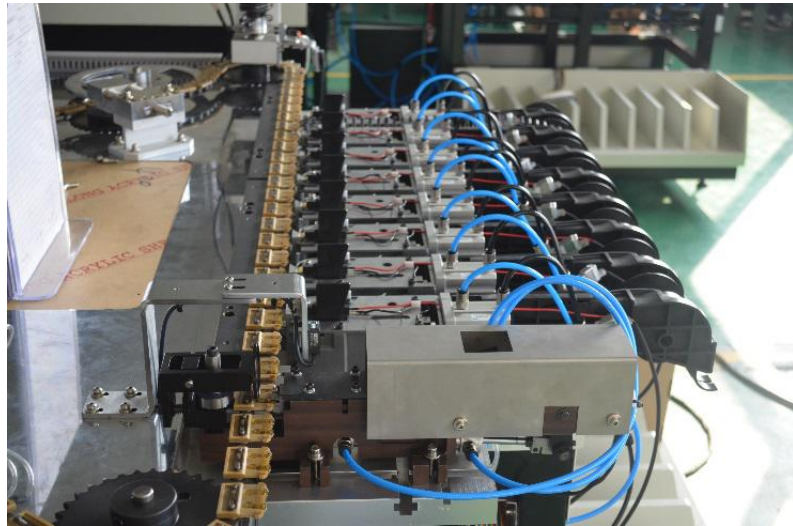
VISION POSITION CORRECTION



- 0.3 mega pixel, 256 grey scale industrial camera for vision system
- Fiducial mark recognition for positioning and alignment
- Vision automatic align insertion position
- Position deviation less than 0.001mm



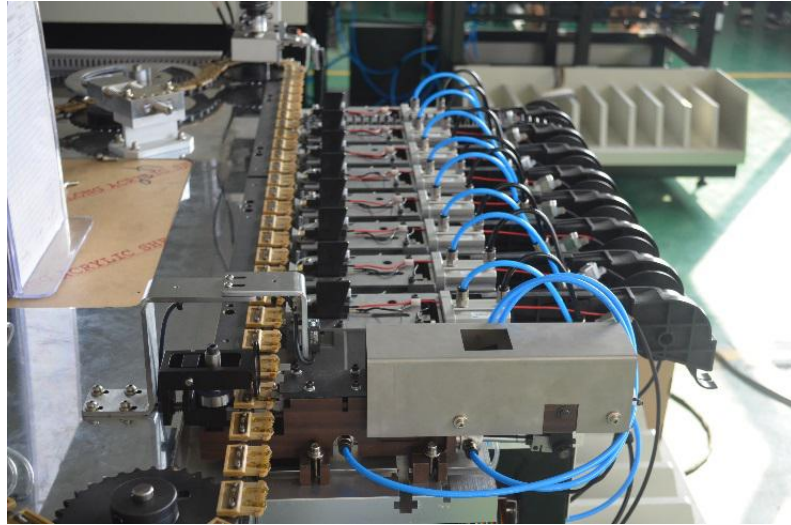
SEQUENCER CHAIN



- 750W Panasonic servo motor, high speed & stable
- Strengthened chain tension adjustment, convenient for adjustment
- 107 pcs longer lifetime component carrier clips(Consumable parts)



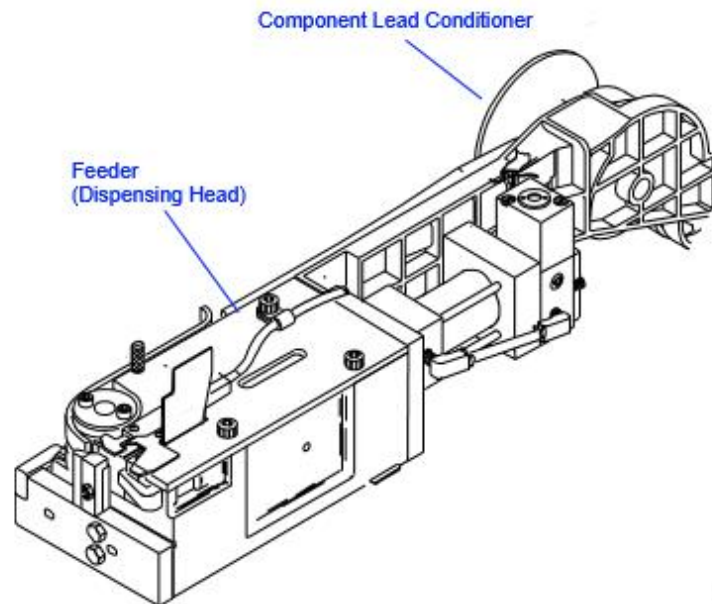
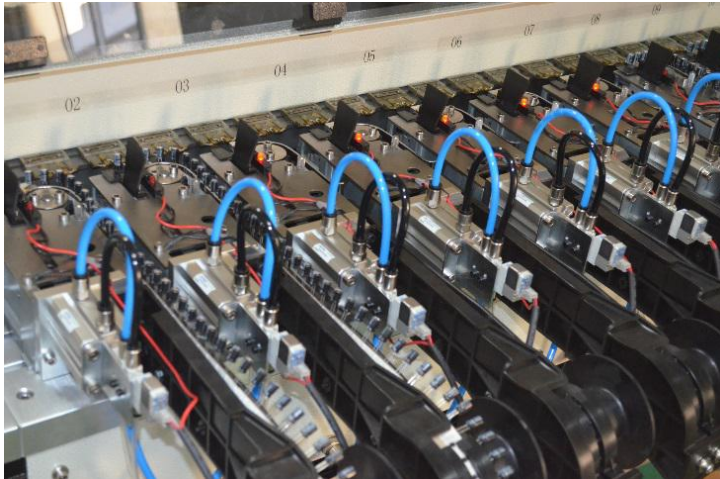
SEQUENCER CHAIN



- Servo motor, high speed & stable
- Strengthened chain tension adjustment, convenient for adjustment
- longer lifetime component carrier clips(Consumable parts)

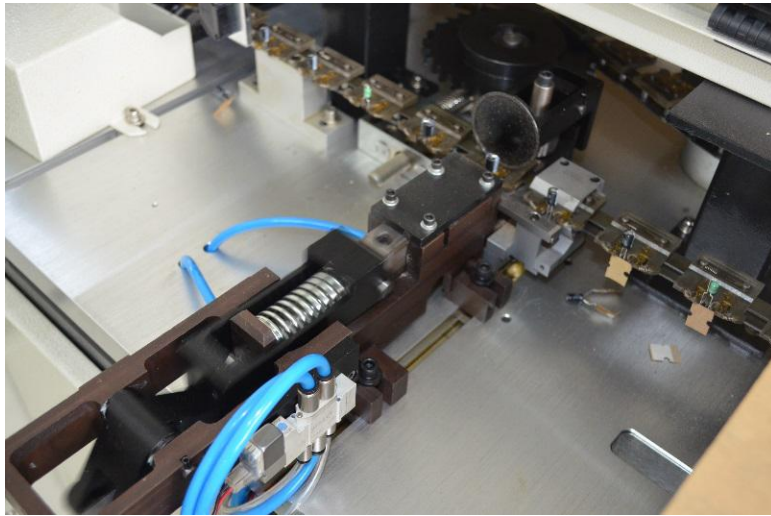


RADIAL LEAD COMPONENT FEEDER

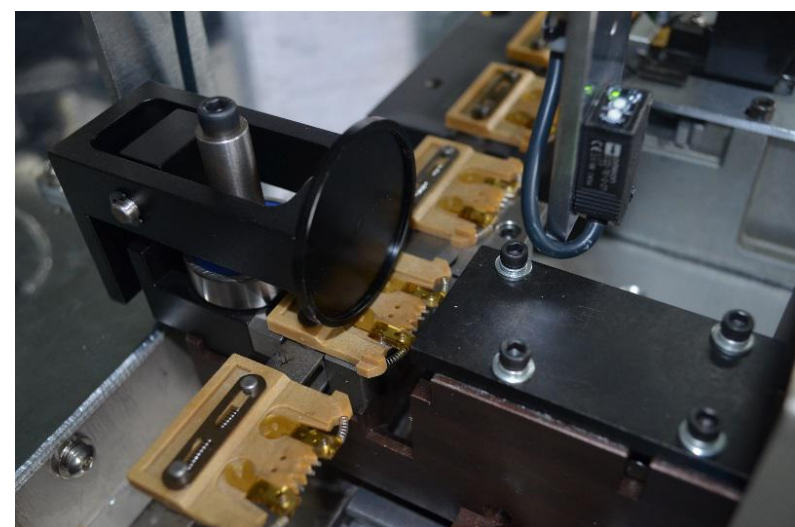


- 10/20/30/40/60/80 Component stations
- Compatible with Universal insertion m/c feeder
- New designed, reduce component jam possibility
- Fast changeover , convenient for maintenance
- Feeder add-on retrofit availability after ex-factory

TAPE CUTTER STATION



- New designed to guaranteed lead cutting verticality & long lifetime
- Improving tape clamp & remove structure
- Convenient for alignment & maintenance



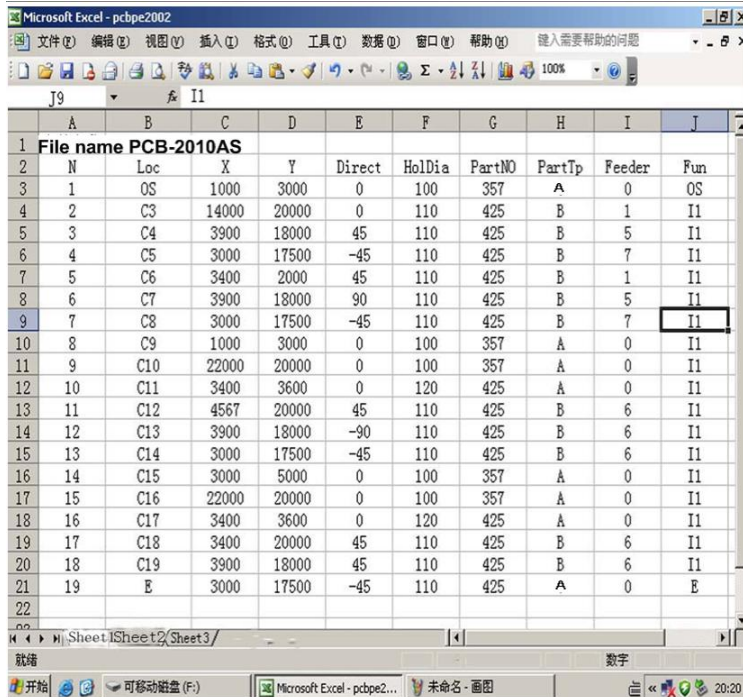
ELECTRONIC CONTROLLER



- Japan servo driving system
- Windows 7 system
- Industrial computer control with Chinese/English interface
- Option of remote control availability



PROGRAMMING

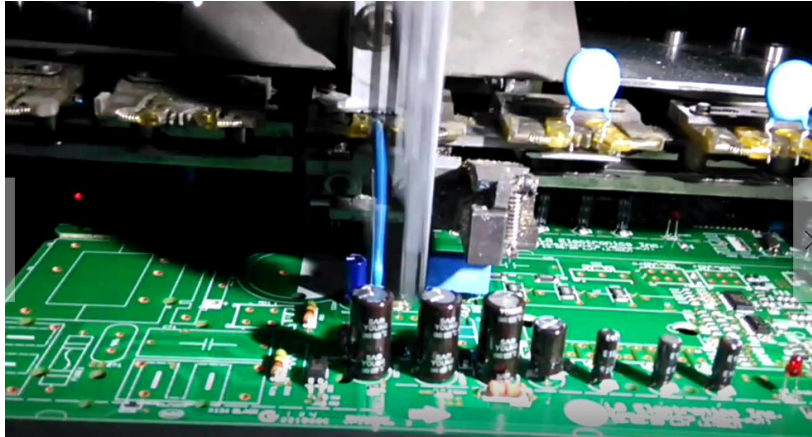


File name	PCB-2010AS	N	Loc	X	Y	Direct	HoLDia	PartNO	PartTp	Feeder	Fun
1		OS	1000	3000	0	100	357	A	0	OS	
2		C3	14000	20000	0	110	425	B	1	I1	
3		C4	3900	18000	45	110	425	B	5	I1	
4		C5	3000	17500	-45	110	425	B	7	I1	
5		C6	3400	2000	45	110	425	B	1	I1	
6		C7	3900	18000	90	110	425	B	5	I1	
7		C8	3000	17500	-45	110	425	B	7	I1	
8		C9	1000	3000	0	100	357	A	0	I1	
9		C10	22000	20000	0	100	357	A	0	I1	
10		C11	3400	3600	0	120	425	A	0	I1	
11		C12	4567	20000	45	110	425	B	6	I1	
12		C13	3900	18000	-90	110	425	B	6	I1	
13		C14	3000	17500	-45	110	425	B	6	I1	
14		C15	3000	5000	0	100	357	A	0	I1	
15		C16	22000	20000	0	100	357	A	0	I1	
16		C17	3400	3600	0	120	425	A	0	I1	
17		C18	3400	20000	45	110	425	B	6	I1	
18		C19	3900	18000	45	110	425	B	6	I1	
19		E	3000	17500	-45	110	425	A	0	E	

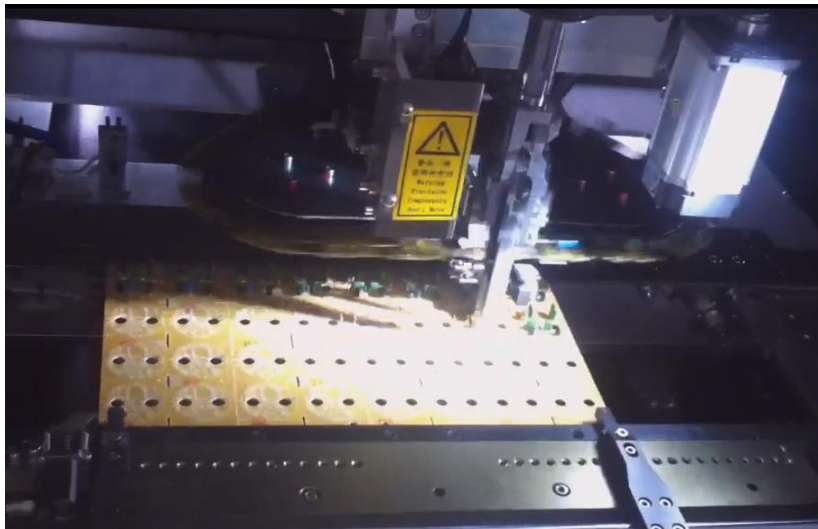
- USB port for data transfer, Gerber format (Excel)file input, program automatically created
- Vision on line teaching position, automatically align position



SERVICE REQUIREMENTS

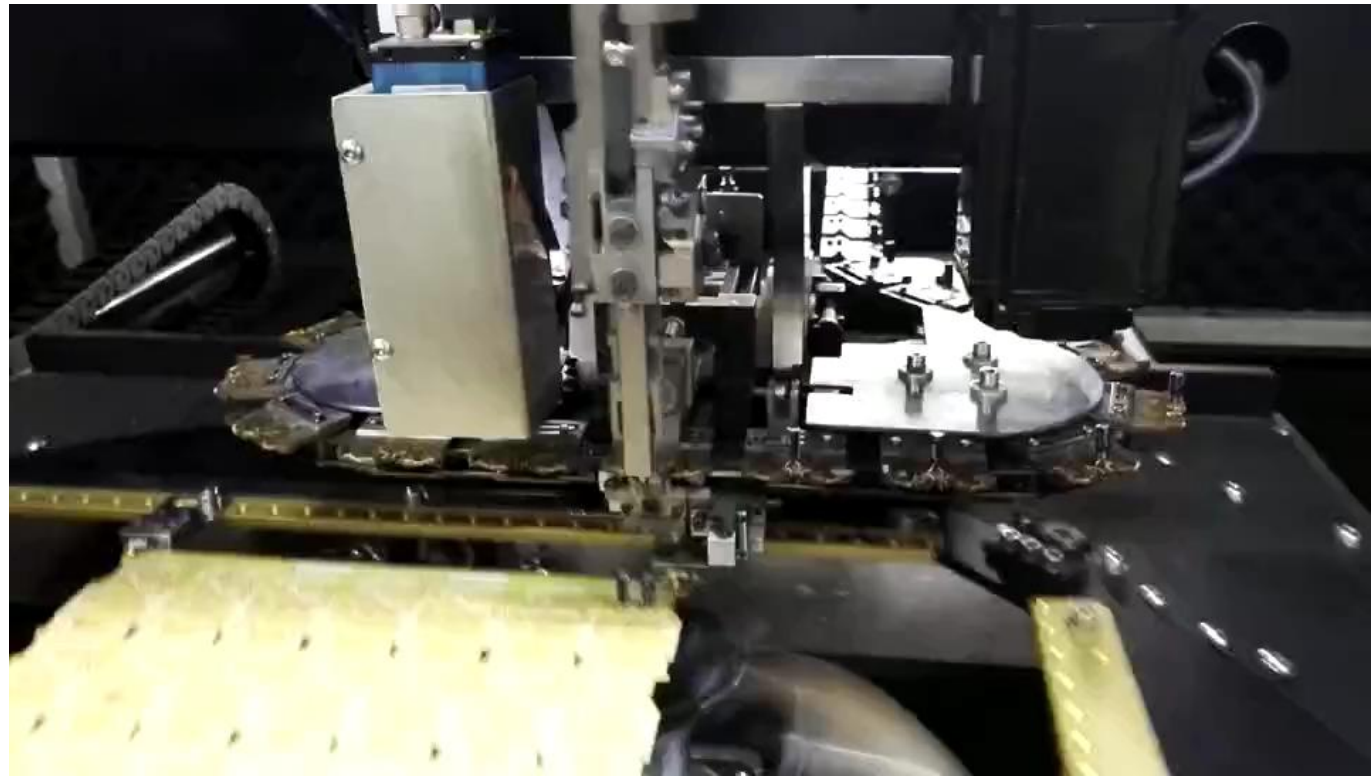


- Power requirement: AC220V, 50/60Hz, 1.5Kw
- Maximum Neutral to Earth Ground voltage is limited to 5VAC.
- Compressed air requirement 0.6 Mpa 0.3m³/min
- Non-lubricated, dry air, dew point must be at 11°C (51°F) below ambient temperature



MACHINE WORKING VIDEO

- List Price \$70K
- Worldwide Support
- Free Installation/
Training
- Auto PCB loading
- 6 Months ROI



[More Radial machine video, Please Youtube: Auto Insertion](#)

1, Please visit : www.smthelp.com

2, Find us more: <https://www.facebook.com/autoinsertion>

3, Know more our team:

<https://cn.linkedin.com/in/smtsupplier>

4, Welcome to our factory in Shenzhen China

5, Look at more machine running

video:<https://www.youtube.com/jasonwuSMT>

4, See more in Google: Auto+Insertion